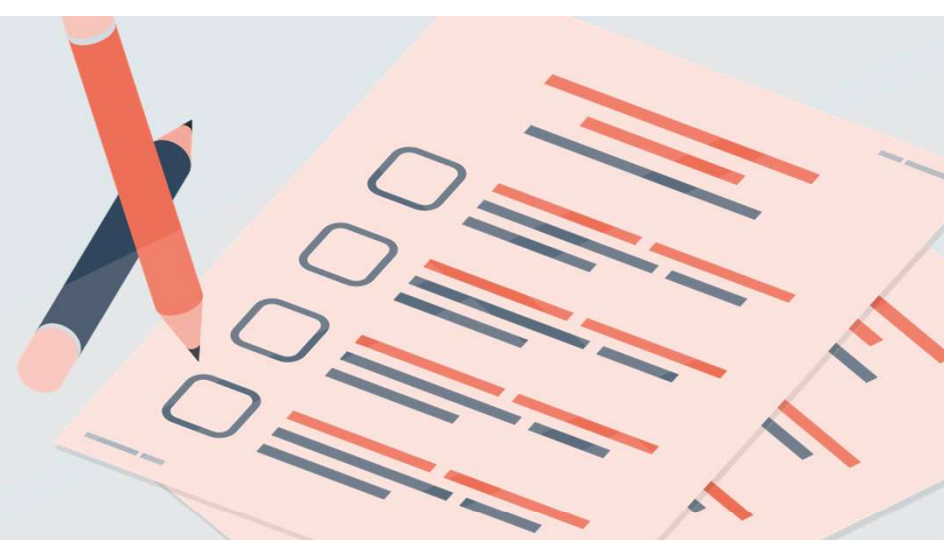


Applying for linked data in TAS

While each application for linked data is unique, we have summarised the process into a few key steps to assist Researchers.



1

Plan your study

Review datasets via the Tasmanian Data Linkage Unit (TDLU) website. Contact TDLU via email or phone before applying. You may request a quote from TDLU via the PHRN OAS or by email.



2

Determine which forms to complete

Review the mandatory forms you need to complete. You are welcome to submit a draft ethics application to TDLU for review.



3

Submit Expression of Interest to TDLU

Submit Expression of Interest via the Population Health Research Network Online Application System (PHRN OAS). Once approved TDLU will provide a data linkage feasibility letter and the Expression of Interest is converted into an application in the OAS.



4

Submit to the Ethics Committee

Submit your Human Research Ethics Committee application online at <https://ethics.utas.edu.au/>. Ensure that the same information is supplied in both your PHRN OAS and HREC applications. Once your HREC application is approved, upload your HREC application and approval letter to the online application system and inform the TDLU.



5

Data Custodian approval

TDLU will seek Data Custodian approval for datasets in the Master Linkage Map. Either you or TDLU will contact non-Master Linkage Map Data Custodians depending on the Custodian. TDLU can assist if required.



6

Final approval

TDLU will provide a data access agreement for signing once all other approvals are in place. Once all approvals have been obtained, TDLU will request the cohort and begin linkage.