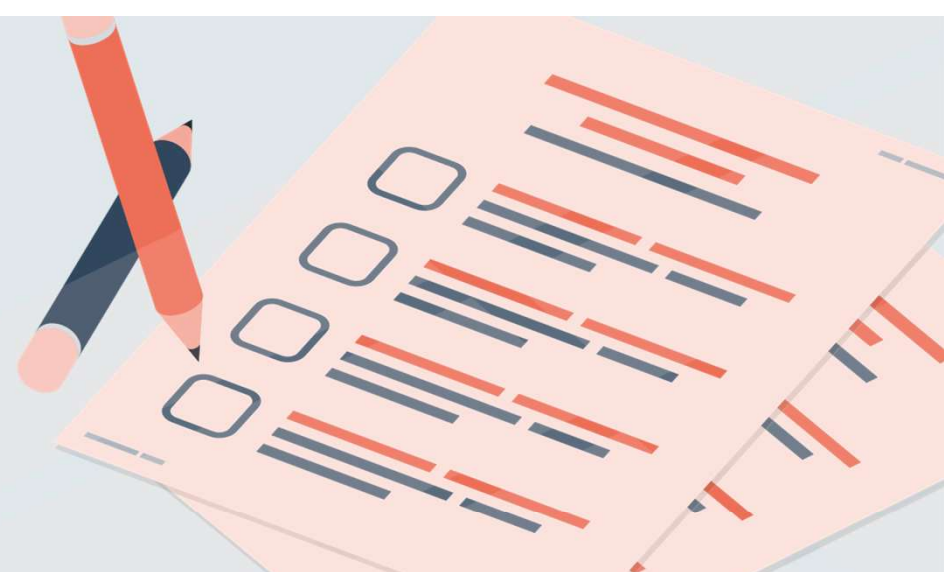


# Applying for Commonwealth linked data

While each application for linked data is unique, we have summarised the process into a few key steps to assist Researchers.



1

## Plan your study

Read the [recommended researcher resources](#) on the Australian Institute of Health and Welfare (AIHW) website. Contact AIHW Data Integration Services Centre to discuss your project on [linkage@aihw.gov.au](mailto:linkage@aihw.gov.au).



2

## Review forms you need to complete

Review the forms you need to complete [here](#) and contact AIHW Data Integration Services Centre to start this process.



3

## Initial feasibility questionnaire

Request a feasibility questionnaire form from the AIHW Data Integration Services Centre. Upon approval of your feasibility questionnaire, you will be sent a technical assessment form. An invoice for the feasibility assessment service and a whole-of-project quote will be sent for acceptance before progression to ethics approvals.



4

## Technical assessment

Submit your technical assessment form to the AIHW Data Integration Services Centre.



5

## Submit to the Ethics Committee

Submit your AIHW Ethics Committee application using the online EthOS system. You will also need to obtain approval from an Ethics Committee associated with your organisation. Visit the AIHW Ethics Committee website for more information.



6

## Advise of your ethics approval

Once you receive your AIHW ethics approval letter, email the approval letter and all other documents listed on the approval letter to the AIHW Data Integration Services Centre.



7

## Data Custodian approval

Depending on the dataset, AIHW will contact the Data Custodian on your behalf, or you will need to contact them directly. AIHW will advise you on the process.



8

## Data access

Once all approvals have been obtained, any data transfers to the AIHW can occur and AIHW will prepare and deliver the linked data.